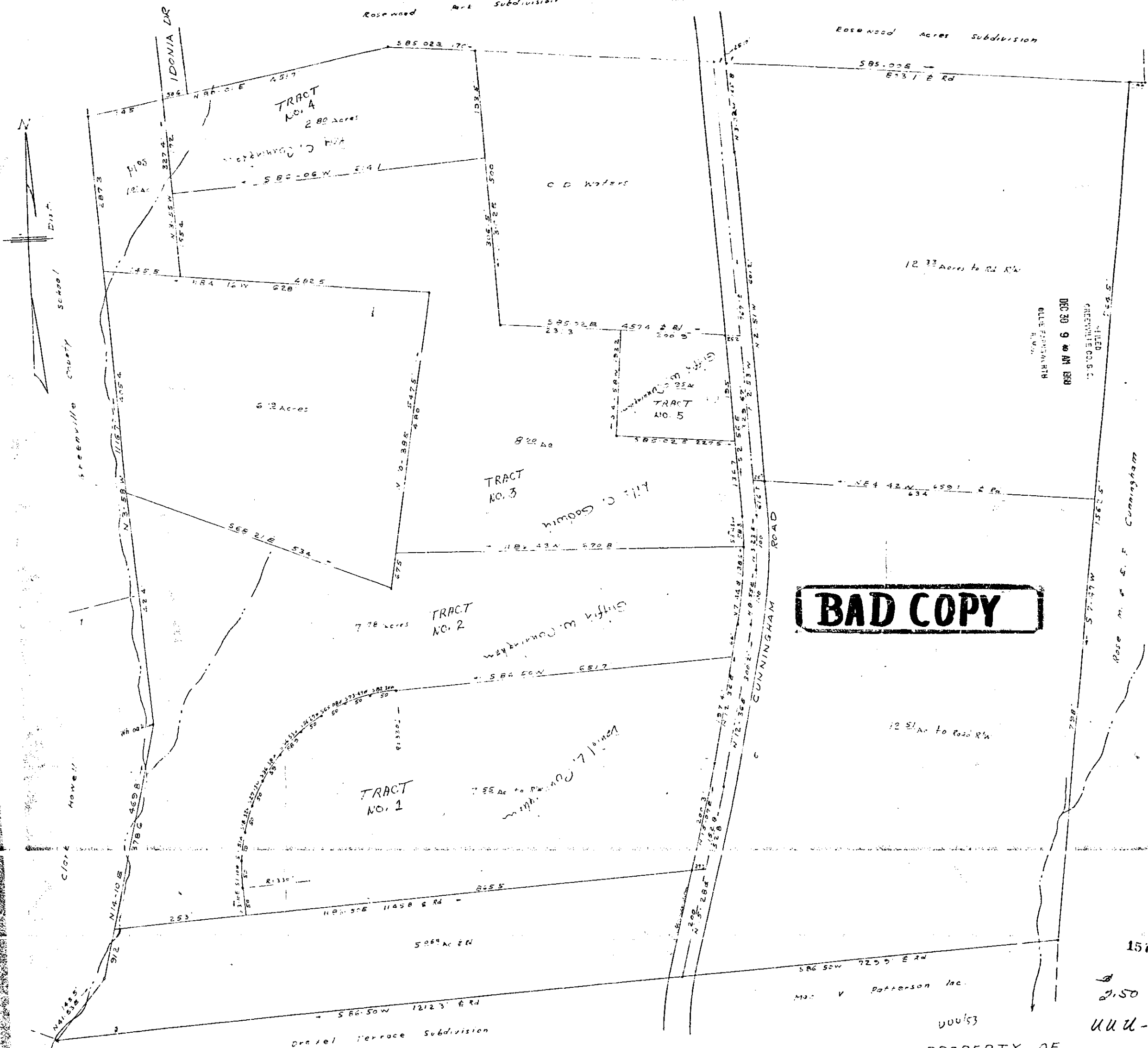


#15479 Filed This 20th Dec 1968
 And Recorded in Vol. UUU page 53 9:40 AM
 Allie W. Cunningham
 Register Meeme Conveyance Greenville County, S. C.

Plat Book-UUU-Page 53



BAD COPY

THIS PLAT IS NOT A SUBDIVISION
 AS DEFINED BY THE GREENVILLE
 COUNTY SUBDIVISION REGULATIONS.
 12/6/1968
 Dore M. Williams
 Planning Secretary, Director of
 Greenville County Planning Commission

REVISED 11/19/68

PROPERTY OF
 W. L. CUNNINGHAM
 NEAR GREENVILLE S.C.
 SCALE 1"=100
 NOV 1964

FILED
 GREENVILLE CO. S. C.
 DEC 30 9 40 AM 1968
 ALLIE W. CUNNINGHAM

15178
 2.50
 UUU-52

S. C. R. M. 12/6/1968